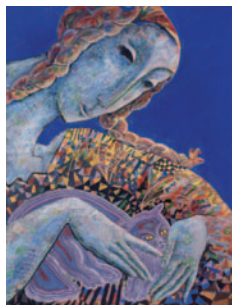


# The Art of Expression since 1584

The Hahnemühle Digital FineArt Collection



## White Velvet, 268 g/m<sup>2</sup>

Bright White, Fourdrinier Paper

©2000 Jesús Vilallonga "Blue Malvi" – www.vilallonga.com

### Product Description

Available in 17", 24", 36" and 44" rolls and all standard cut sheet sizes. White Etching is a 25% rag, bright white fourdrinier paper with a surface structure similar to "German Etching", with a higher whiteness. White Etching is suitable for use in all wide format and desktop printers.

### Applications and Characteristics

The printed side of this paper has been specially coated for excellent image sharpness and optimum colour graduation. The coating also offers a very high level of water resistance.

Common applications include:

Fine art reproduction, business cards, greetings cards, post cards, menu and Novelty applications, certificates and presentation prints for display purposes.

### Physical Characteristics

	Unity	Valuation	Test Norm / Notes
Test Conditions		23°C / 50% R.H.	CSS24
Grammage	g/m <sup>2</sup>	268	ISO536
Thickness	mm	0,45	EN 20534
Whiteness	%	94,5	ISO 11475 (W <sub>cie</sub> / D65, 2°)
Opacity	%	99,0	DIN 53146
Media Colour		bright white	not bleached
pH-Value total		8,1	DIN 53124
Water resistance		very high	
Cobb		73	EN 20 535
Ink limit		245	
Special features	optical brighteners		

All indicated data to be understood as typical average values.

### Conditions of use and storage

Use and store ideally at a relative humidity of 35 to 65% and a temperature of 10 to 30° C (50° – 86°F.) All recommendations and product indications are for your guidance, and are subject to our test criteria, these remain subject to change without prior notice. There is no guarantee that the same results can be consistent.

Use care in handling printed material, surface susceptible to abrasion.

Store papers in archive quality envelopes, folders, and boxes.

Use only archive grade tapes and glues for mounting & framing.